

Painter's Ink

Central Oklahoma Society of Tole and Decorative Painters
Tole Diggers Oklahoma City, OK
June 2011

Presidential Musings Hello,

First I wanted to say Thank You to everyone that made and donated cookies for the Joan Johnson Reception at the SDP office in Wichita. Everyone that attended that evening was very appreciative of the homemade cookies. Great Job!

And Thank You, **Tole Diggers**, for my beautiful necklace, bracelet & earrings; they were the hit of the banquet. I received so many compliments on them and my answer was they had been given to me by **the chapter**. Everyone thought that was great.

I hope that everyone that got the chance to go to the conference in Wichita had a great time and found wonderful things to share. Start planning now for next year and celebrate the 40th year anniversary with SDP. Conference is May 14 – 19, 2012 and plans have already started for the celebration and actually the celebration will start soon since this is the 40th year for SDP.

Another thing to do is check out www.decorativepainters.org and sign up for the blog. You can see all the fun that was had this year.

Be sure to join us at the June meeting and paint a fun Uncle Sam pin with **Mariellen Morgan**.

See everyone soon, **Sue...**

June 13, 6:30 p.m. Meeting: Painting Patriotic



Putnam City Christian Church Fellowship Hall 5711 NW 42nd Street OKC 73122

405-789-6832

Colors: "Americana" acrylics/ Pre-register Please \$4.00 payable to Tole Diggers

Teacher, **Mariellen Morgan**

Tuscan Red

Bleached Sand

Cool White

Deep Burgundy

Deep Midnight

Flesh tone

Light Cinnamon

Shading Flesh

Toffee

Uniform Blue

Williamsburg Blue

Uncle Sam pin to Paint/ Bring regular painting supplies***



Note: Your Editor dedicated this issue to

The Wild Things

Safari Cookie Guides: Edna Gassei, Linda Seikel, Vicky McCullough, Jacqueline Neil

TREASURY

Linda Seikel, Treasurer

TOLE DIGGERS MONTHLY TREASURERS REPORT

DATE: 4/30/2011
Savings Account Balance: \$4,867.90

Checking Account Balance: April 1st \$13,556.25

Chapter Income		Chapter Expense	
Dollar Table	\$1.00	CPD*	(\$65.57)
Membership	\$5.00	Retreat	(1,753.23)
Retreat	\$825.00	Ways & Means	(198.83)
State Fair Scholarship	\$60.50		
Total :	\$891.50	Total:	(2,017.63)

Tole Country Income		Tole Country Expense	
Class Registration	\$450.00	Credit Card Fees	(\$20.00)
Class Fee	\$716.00		
Class Project Fee	\$788.00	Total:	(\$20.00)

Total:

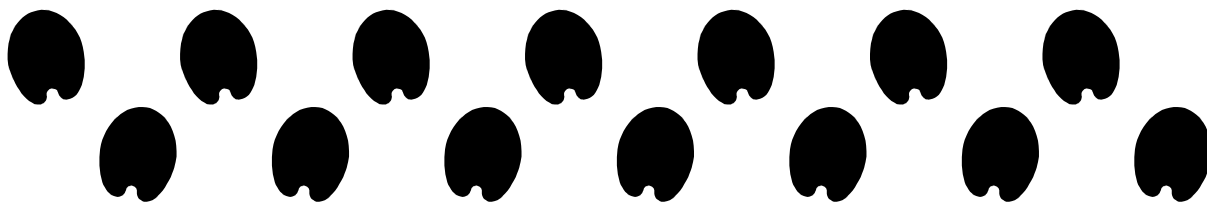
Plus \$457.00 checks received not deposited until May brings balance to \$14,194.12

Total Income \$2,845.50

Total Expense: (\$2,037.63)

Current Balance Checking April 30th \$13,737.12

*Christmas Party Decorations



**Tole Diggers
Minutes of May 9, 2011**

The meeting was called to order at 6:30 pm by the President, Sue Bowers. Marlene Word presented the Inspirational. Mariellen Morgan made a motion to accept the April minutes as published in the Newsletter. Lila Raidt seconded motion. Motion passed unanimously.

Treasurer's Report presented by Linda Seikel. The report is to be filed as read.

Membership Report was presented by **Nancy Butler**. Twenty-eight members are present. No guests this evening.

Sunshine Report presented by **Norma Stinchcomb**. **Bonnie Duncan's** father-in-law passed away. **Mariellen Morgan's** twenty-one year old grandson who lived in Seattle, WA passed away. Betty Jeffery's has the shingles. **Gayle Dimery** is suffering with leg cramps.

Sue Lozano accepted First Vice-President's Chair. The Chapter accepts her position.

Retreat Report was presented by **Beverly Rogers**. Fun was had by all with no bad weather. A red plate was left behind. Contact **Beverly** if anyone knows the owner of the plate. **Beverly** asked for pictures of the retreat for the website.

Newsletter deadline is 25th of May.

Funny Money Report was presented by **Mariellen Morgan**. Money is given for attendance to the meeting and for donating disposable razors to Special Projects and Hugs Project. **Mariellen** reminds members to bring paper sacks filled with good things for the November meeting.

Mariellen Morgan passes list for members to sign up for 4th of July painted pin to be taught at the June chapter meeting. Price of class is \$4.00.

Hospitality Report for bringing cookies to June meeting is presented by **Evelyn Breeden**. Members bringing cookies to June meeting are as follows: **Edna Gassei, Linda Seikel, Vickie McCullough, and Jacqueline Neil**.

Special Projects Report was presented by **Sheron Gann**. A big thanks for bringing stuffed animals for the Police and Fire Departments and EMSA. **Sheron** requests for additional painted boxes to be brought to the next meeting.

Ways and Means Report was presented by **Judy Guercio**. **Judy** requests members to sign list and take quilt tickets. There are sixteen leftover charms from Tole Country 2010 and can be purchased for \$6.00 each. A motion was made by **Linda Seikel** to reduce the price to \$3.00 per charm. **Debbie Suenram** seconded motion. Motion carried.

Sue Bowers requests members to bring painted items for the August Auction. Gift baskets can be made by members as well. Cookbooks are still available. **Sue** suggested that they make great graduation and wedding gifts.

Sue Bowers displays a suitcase that **Judy Guercio** has painted to be raffled during the SDP Convention in Wichita, KS. The suitcase is to be raffled Tuesday evening, May 17 at 9:45 pm. Members can purchase tickets tonight for the suitcase for \$1.00.

Tole Country Report presented by **Vickie McCullough**. **Mary Walley** and Lou Harwick volunteered to work Hospitality during Tole Country.

Debbie Suenram presented Class Sales Report. At present, there are twelve students, forty-eight classes and three paid booth spaces.

Sheri Johnson reports on the Tole Digger website. Outdated material needs to be deleted.

No Old Business to discuss. New Business:

- **Sue Bowers** reports on the April 13th luncheon seminar presented by Oklahoma Media Network and the Oklahoma Center for Nonprofits. Many

ideas were presented concerning press releases, public service announcements, and ways to solicit grant money from corporations.

- The nominating committee for 2011 consists of the following members: **Sheron Gann, Christy O'Connor, Shirley Williams, Debbie Suenram and Linda Johnston.** The committee chair is **Debbie Suenram.** The committee is to present their report at the August meeting. A motion was made by Rose Isch to accept the nominating committee. **Linda Seikel** seconded the motion. Motion carried.

Door prizes were presented.

Norma Stinchcomb presents a gift of congratulations from the chapter to **Sue Bowers** for the honor of being installed as the National Society of Decorative Artists Vice-President during the upcoming May convention. **Doris Ballard** made the beautiful necklace set that includes earrings and bracelet.

The meeting is adjourned at 7:20 pm.

Minutes submitted by **Renee O'Donnell**, Secretary

SUNSHINE: Glad to hear Barbara Close (former member from Piedmont) and **Sandy Barnes** (member from Chickasha) are fine.

The only sunshine I have is that **Mariellen's** grandson in Seattle died the first of May from a fall off a balcony. He was 21. **Norma**



All things bright and beautiful, All creatures great and small, All things wise and wonderful The Lord God made them all. (Copied)

NEWSLETTER DEADLINE: 26TH
gayledimery@yahoo.com (405) 329-5582 THANK YOU!!

Retreat 2012

It is not too early to be thinking about next year's retreat. Start saving NOW, just \$15 per month from June 2011 to Mar 2012 will be enough to pay for retreat and all the classes.

Don't miss out on the fun and relaxation of getting away from it all and painting with your fellow club members and friends.

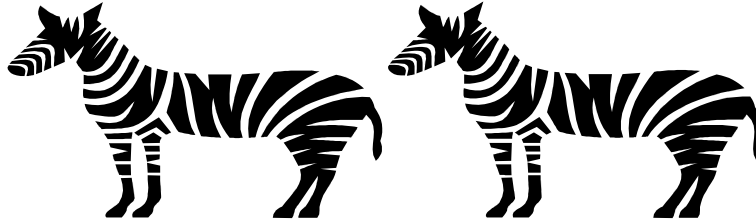
Have ideas and/or suggestions for next year? Have a theme idea?

Contact **Beverly Rogers** at purplebutterflies4me@gmail.com or call 694-1551



CONGRATS TO **SUE LOZANO** FOR ACCEPTING VICE PRESIDENT OPENING!

Don't forget the Soldiers, Painted Boxes, and nice bagged Items or Baskets toward November Sale. Also bring Books to donate to Tole Country September sale.



2011 Tole Country Committee Chairs E-mail from Vicky to Gayle: May 24, 2011 8:22:05 AM
Subject: Re: June newsletter

Gayle,

The lunch form was for 2010, but I updated it to send out with the vendor contract. I don't know who to contact about getting the new one on the website.

Here is the list of volunteers I have for 2011 Tole Country:

Director-[Vicky McCullough](#)

Asst. Director- [Edna Gassei](#)

Advisor- [Sue Lozano](#)

Admissions-[Ernestine Williams](#), [Mariellen Morgan](#), [Linda Johnston](#), [Doris Ballard](#)

Badges- [Thursday girls](#), [Lila Raidt](#)

Brochures-[Debbie Suenram](#)

Classes-[Debbie Suenram](#), [Judy Guercio](#)

Classroom setup- [Karen Garr](#), [Vicky McCullough](#)

Decorations- [Vicky McCullough](#), [Shirley Williams](#)

Door Prizes- [Lila Raidt](#), [Norma Stinchcomb](#)

Exhibitor Booths- [Sheron Gann](#), [Mariellen Morgan](#), [Edna Gassei](#), [Marlene Word](#)

General Store- [Nancy Butler](#), [Norma Butler](#)

Hospitality- [Mary Walley](#), [Lou Harwick](#), [Brenda Rickman](#)

Programs- [Debbie Suenram](#)

Publicity- [All club members](#)

Registration- [Debbie Suenram](#)

Security- [LaVella Rayls](#)

Signs- [Edna Gassei](#)

Technical Director- [Rose Isch](#)

Web Page- [Debbie Suenram](#)

Demonstrations- ?

And please, please, if I left anyone out don't take it personal and please let me know. Or the same thing, if I put someone on and they don't want the job let me know. Sometimes I get bombarded and don't get everything written down.

Thank you Gayle,
Vicky

And oops, I see I probably need to contact Debbie about the lunch form...LOL!

Have a good day. :)

ART IS A FUN AFFAIR



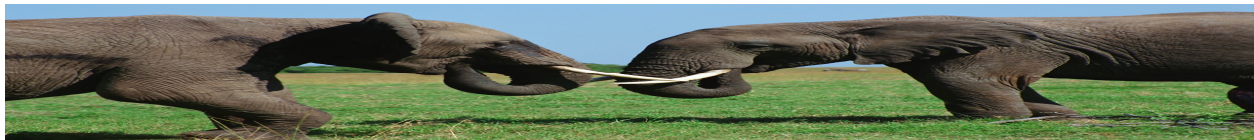
TOLE COUNTRY VENDORS ARE OPEN SEPTEMBER 22, THURSDAY 6:30 PM TO 9 PM
SEPTEMBER 23, FRIDAY 9 AM TO 6 PM, AND SEPTEMBER 24, SATURDAY 9AM TO 3 PM

June Birthdays



June 4 **Wylodene Osburn**
June 7 **Linda Seikel**
June 13 **Christy O’Conner**
June 25 **Melva Gilliam**
June 26 **Edna Gassei**
June 30 **LaVella Rawls**

Grace and beauty surround us
in the wild
Happy Birthday, ladies



Tole Country Lost Painting FOUND – Thank goodness and thank YOU for looking. Hospitality help at Tole Country has volunteered. Thank You.

www.tolecountry.org



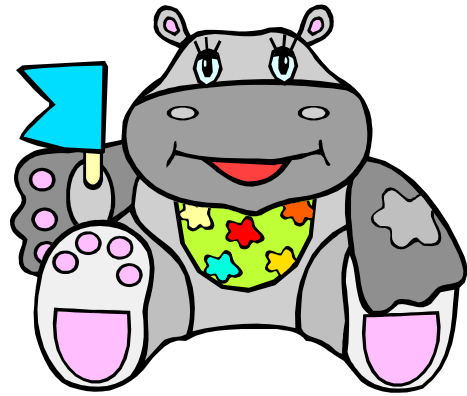
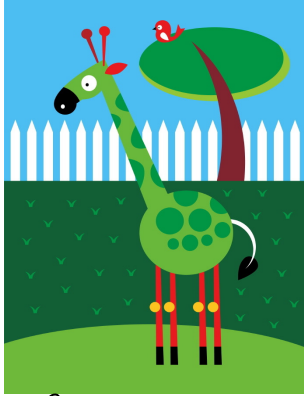
August Ways and Means

Dear Tole Diggers

I would like to announce the plan for our August Ways and Means fund raiser. It will be an auction so we asking our members to donate a:

Theme basket or box with at least one painted item in it.

It’s always so much fun to see all the different and creative ideas. If you would like to do something a little different this year, we decided to have an **Art Show** as well. All donations will be judged by popular vote **and prizes** will be awarded! Call me, **Judy Guercio**, if you have any questions about the plan. See you at the June meeting.



Member Input Welcome
www.decorativepainters.org

good to know:

www.tolecountry.org
www.turtlehollowartists.com

Dear Painting Friends,

Television affords **free art lessons** Saturday morning. Sue Scheewe (www.painting-books.com) Scheewe Publications Inc. and BLOG (www.susanscheewe.com) I well remember sitting to watch Sue watercolor scenery and florals for me. Now I understand there is an oil teacher who is liked.

One of my favorite teachers is now **ONLINE**. Joan Patterns (www.joanpatterns.com) offers your choice of 100 POM (Pattern of the Month), 15 Books and 18 Lesson Packets with Instant DOWNLOADING for color & text & excellent for printing. Joan Johnson's family recently donated a collection of her pieces to SDP headquarters, and we Tole Diggers donated cookies for a reception there.

In case your Convention catalog is still lying around, pages 32-33 have excellent **Basic Supply Lists** with which to arm your paint carryalls. So many media these days to try...recently the class used a bent handle palette knife to paint Masonite with textures. Before that the class painted acrylics on a piece of tar paper. Imagine!

Speaking of supplies, have you replaced your **fine liner brush or large flat brush** lately? Coupons are valuable to carry and use locally as you shop.

Back to **CONVENTION CATALOG**, I hear we've at SDP a new collection of Kansas state flower, the Sunflower, by a variety of artists. How many Sunflower Patterns or Media have you in your collections? It is lots of fun to wander through old (scratch that) "Collected Treasured Patterns." Now that I can paint in watercolor, acrylic, and oil, stencil, ink, fabric paint, and texture, I see more possibilities.

While I'm on the subject – very soon EARLY FALL County Fairs will offer prizes for separate media, surface projects – example: **pencil, canvas, acrylic, fabric and mixed**. Why, as early as **AUGUST 15**, The Great State of Oklahoma State Fair will want YOUR entries for its prizes. At the State Fair level, you may enter **photography; scrap booking, painted pumpkins, AND YOUR DECORATIVE PAINTINGS**.

Winners and categories from last years' State Fair entries I printed and will bring to meeting. I hope your name will be among this year's winners and entrants.

Gayle Dimery, State Fair & Scholarship Chair

Thanks to **Norma Stinchcomb, Doris Ballard, and Chapter Members** for Special **Sue Bowers** Convention Gift donations and Committee. Kudos to you each!

PAINTER'S INK

Tole Diggers Newsletter

Editor

Gayle Dimery

121 Summit Ridge Ct.

Norman, OK 73071

Watch for Your Painter's Ink issue in July and its
Patriotic Picnic news
With all kinds of Clucking, Crowing, and Tweeting
Mind the feathers
'Ere we entertain Angels Unawares

Members: You Are Special
Appreciated
Admired
And Loved