

Painter's Sink



**Central Oklahoma Society of Tole and Decorative Painters aka *Tole Diggers*
September 2011 Oklahoma City, OK**

Officers

President	Sue Bowers
1st Vice President	Sue Lozano
2 nd Vice President	Nancy Butler
Secretary	Renee O'Donnell
Treasurer	Linda Seikel
Tole Country Director	Vicky McCullough
Asst. T.C. Director	Edna Gassei

PRESIDENTIAL MUSINGS

Wasn't the Auction and Picnic fun? The baskets and art was fantastic. Everyone out did themselves with the painting, decorating and food. Can't remember a picnic when we didn't have a variety of great food and this one was no different. We raised \$793 with the auction Great Job! Thank You to everyone that brought something for the auction or purchased something in the auction.

Remember in September the meeting on the 12th is a business meeting. Then Saturday the 24th is our Fall Party. There will be prizes, goodie bags, food and painting. So mark it on your

calendar and put your name on the list for a fun Saturday in September.

We got word from the IRS and all our penalties have been waved, we owe nothing.

Look forward to seeing everyone in September,

Sue.....

Nominating Committee Report:

The nominating committee met on July 28, 2011. We hereby nominate these members in good standing for the 2012 slate of officers.

- | | |
|------------------|-----------------------|
| Sue Lozano | President |
| Vicky McCullough | 1st Vice President |
| Christy O'Connor | 2nd V-President |
| Renee O'Donnell | Treasurer |
| Edna Gassei | Tole Country Director |

Respectfully submitted,
Debbie Suenram

2011 Nominating Committee Chairman
Committee Members: Debbie Suenram, Chair, Sheron Gann, Linda Johnston, Christy O'Connor, Shirley Williams



Welcome

To our guests for cool August Picnic and Auction

Sunshine

Mike's Violet's mom is ill in hospital. Gayle Dimery was congratulated on her and Vel's 49th wedding anniversary. Good to see Laura McMahan, former member, visiting and Lila Raidt, Marge Battles here. Norma Stinchcomb

Hello!

It was announced at Picnic/Auction this past Monday night that on Saturday September 24th there will be a Fall Party. I have attached a flyer with the information. Please join us and bring a friend if you like. Note reservation need to be made by September 20th. We look forward to seeing everyone for a day of fun and painting.

Sue Bowers
President, Tole Diggers 2011

Tole Digger

Minutes

August 8, 2011

The meeting was called to order at 6:20 pm by the President, Sue Bowers.

Sue Bowers asked for the members that brought guests to introduce them to the membership.

Norma Stinchcomb presented Sunshine Report. Gayle Dimery and her husband will celebrate their forty-ninth anniversary this month. Mike Violet's mother is in the hospital with pneumonia.

Debbie Suenram, chairman of the nominating committee, announced the 2011-2012 roster of officers. They are as follows: President - Sue Lozano, 1st VP - Vickie McCullough, 2nd VP - Christy O'Connor, Secretary - Renee O'Donnell, and Treasurer - Linda Seikel.

Sue Bowers displayed a found red plate and asked if it belonged to one of the chapter members. No one claimed the plate.

Sue Bowers announced September 12, 2011 to be a business meeting. To help with the transition of not having Tole Country this year, Sue announced the plan for having a Fall Party on Saturday 24, 2011 ten am to four pm. The party will be a potluck event with a painting project, a fall banner using acrylic paints. The quilt drawing will be held at 2:15 pm. There will be a charge of \$10.00 that covers painting surface and rent of the fellowship hall. Members must reserve their space by September 20, 2011 by signing sign-up sheet or calling Sue Bowers at 405-286-5363. The Tulsa Chapter and Sooner Chapter will be invited as well as the teachers and students that had signed up for Tole Country. The Executive Director of SDP has been invited and has accepted.

Marlene Word led the prayer before we formed the line to get our food.

The meeting was adjourned at 6:30 pm.

At 7:00 pm, Rose Isch announced that the chapter had

not voted to use items from the library in the auction and the November funny money meeting. Mariellen Morgan made a motion to liquidate items from the chapter library. Marlene Word seconded. Motion carried. Minutes submitted by Renee O'Donnell, Secretary

....*about teamwork*.....
Learn to say 'no' to the good so you can say 'yes' to the best.

John Maxwell

Once our minds are 'tattooed' with negative thinking, our chances for long-term success diminish.

John Maxwell

We choose what attitudes we have right now. And it's a continuing choice. John Maxwell

One man can be a crucial ingredient on a team, but one man cannot make a team.

Kareem Abdul-Jabbar

More on teamwork...

Football is an honest game. It's true to life. It's a game about sharing. Football is a team game. So is life.

Joe Namath

A team in an ordinary frame of mind will do only ordinary things.

In the proper emotional state, a team will do extraordinary things. To reach this state, a team must have a motive that has an extraordinary appeal to them.

Knute Rockne



Build up your weaknesses until they become your strong points.


Knute Rockne

Ask not what your teammates can do for you. Ask what you can do for your teammates.

Magic Johnson

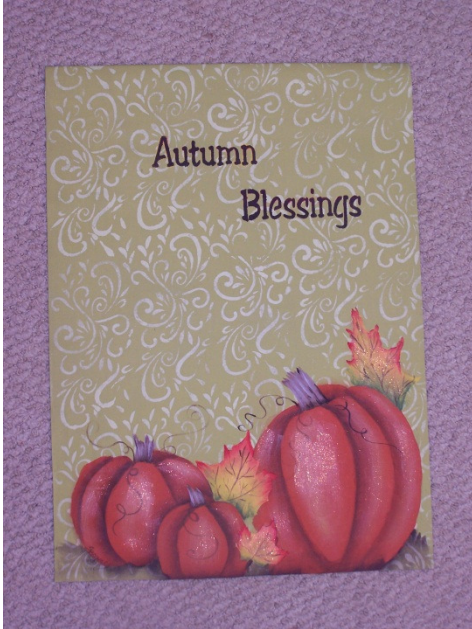


Newsletter Deadline: September 26th: gayledimery@yahoo.com 405)329-5582

The cats are coming in October... 

***FALL PROJECT PICTURED NEXT WITH ORANGE PUMPKINS AND LAVENDER STEMS ON SAGE GREEN FIGURED BACKGROUND: "AUTUMN BLESSINGS"

SDP Dues are \$50.00 for 2012:
Society of Decorative Painters
393 N. McLean Blvd.
Wichita, KS 67203-5968



**TOLE DIGGERS
INVITES YOU TO**

Join us for a “Fall
Party”

**Pot Luck, Painting
& Prizes**

Saturday

September 24,

2012

10 am – 4pm
Doors open at 9:30am

Putnam City Christian
Church Fellowship Hall
5711 N W 42nd St, Bethany
OK 73008

Pot Luck Lunch

Bring your favorite dish, dessert will
be provided by the Executive
Committee

Paint a Fall Banner

(Bring your basic acrylic supplies)

Quilt Drawing

2:15pm

Tickets available there \$1 @ or 6 for
\$5

Door Prizes ~ Goodie Bags

\$10 admission

Covers surface and all the fun

Reserve your space toady call Sue
Bowers 405-286-5363 or
paintinsantas@yahoo.com
September 20th Deadline



Membership

Hello Everyone,

UPDATE: **Ernestine Williams** no longer has a home phone. So if you would like to contact her, you will need to call her on her **cell phone: 412-8633.**

Please welcome **Vicki Cotton** back. Vicki has renewed her membership and her information is as follows:

Vicki Cotton
68 Stout Drive
Piedmont, OK 73078
Phone: home: 405-883-6328
Cell: 405-620-1741
email: cotton20@swbell.net

ALSO:

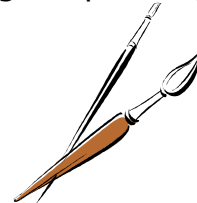
It's that time again! Time is now to renew your Tole Digger membership for 2012. I will be collecting the **\$20 membership fee starting now. Membership is considered delinquent November 1.** *However, if you want to be included in the 2012 membership directory, please pay your dues by the October meeting.* **NO LATE COMERS!** By having your membership dues paid by the October meeting, I will be able to distribute the directory at the November meeting. The membership application is included in this newsletter. And YES I need everyone to complete one

that is paying dues! I use this to make out the listing for the directory.

Nancy Butler
 2nd Vice President / Membership Chairman
 733 N. W. 97th Street
 Okla. City, OK 73114

"Happy Birthday"

"Happy Birthday"
 Have I this to say.
 So now as I pay
 Compliments galore
 To a Tole Digger with more
 Talent, play spirit and joy
 We wish you a NEW TOY—
 Something for painting.



Aug. 21	Past Pres Billie Joe Johnson
Sept. 7	Past Pres Darla Foreman
Sept. 9	Norma Butler
Sept. 12	Renata Thomas
Sept. 17	Debbie Suenram
Sept. 23	Linda Johnston
Sept. 28	Marilyn Wells
Sept. 30	Michael Violett
	Vicki Cotton

CALENDAR

- LABOR DAY Sept. 5
- TOLE DIGGER MEETING Sept. 12
- MEMBERSHIPS TO COSTDP and SDP PAYABLE
- STATE FAIR Sept. 15-25
- Scholarship presentation Sept. 17
- Jr. Art Exhibition Awards
- City Arts Bldg. Fairgrounds
- FALL Party Sept. 24
- New England Painting Mini conven. this fall
- SDP Convention Wichita KS 2012
- Creative Painting Convention Dallas TX 2012 and Las Vegas NV 2012



*More 'bout teamwork, talent,
'n painting*

**Work while you have the light.
You are responsible for the
talent that has been entrusted
to you. [Erica Jong](#)**

Hide not your talents, for use they
were made. What's a sundial in
the shade? [Baltasar Gracian](#)

**You do your best work if you
do a job that makes you happy.
[Betty Davis](#) (1908 - 1989)**

The Lonely Life, 1962

**[Bob Ross](#) (1942 - 1995), *Best of
Joy of Painting, Winter Elegance***

At least one study of blocked
writers has found that they
were more productive and
more creative when they
were essentially forced to
write instead of scribbling
only when the mood struck
them.

Paint those memory boxes,

a gift to a grieving parent who's lost a
baby:

Pastel colors, baby things, floral designs, soft and
gentle scenes and sign name suggested.

Dear SDP Member:

**By now you have probably heard that an
increase in membership dues was approved
by members in attendance at SDP's 39th**

Annual Meeting on May 18, 2011.

While we know that some members are
unhappy with this decision, as your Board of
Directors, **we assure you that this was a
necessary action to keep SDP alive and well.**
As devoted members of SDP, you deserve to
have as much information as possible so you can
understand the reasons that this issue came to a
vote this year.

Times are tough for so many right now, and
we know that an increase in dues is an
unpleasant option. **Please keep in mind that the
increase from \$40 to \$50 represents just 83
cents a month.** We hope you will find a way to
add this to your budget.

Please give some thought to how much the
Society means to you.

Thank you for being a member of our painting
family,
Board of Directors
Society of Decorative Painting

Read on for Membership

Application and Treasurers Report

Attached

Painter's Ink
Gayle Dimery - Editor
121 Summit Ridge Ct.
Norman, OK 73071